

# Honour The Source!



*Mary Lindsay 1897 - 1997*



*Bill & Eileen Lamont*

These are the people who laid the foundation for the breed of beef cattle known as **Speckle Park**. Bill Lamont chose the slogan "The Balanced Beef Breed with the Color Bonus"

We acknowledge them and credit them with what they accomplished. Honesty, hard work, dedication, integrity and vision, with skill and humour; we speak of them with respect, for their characters had neither guile nor deceit.

## THE ORIGIN OF SPECKLE PARK. THE TRUTH.

In 2005 the agricultural reporter of Lloydminster Sask./Alta. television station was Tana Christie from near Kitscoty. She wanted to record the truth about the origin of the Speckle Park breed of cattle and went to the source, the Lindsay family near Greenstreet, Saskatchewan, north of Lloydminster. On video camera she interviewed Ian McKenzie and Rob Lindsay, nephews of the late Mary Lindsay who, in 1906, had come with her parents and siblings from Forfarshire, Scotland.

Standing near cattle descended from their Aunt Mary's Lineback cattle the cousins spoke plainly and simply about the roanish cow of unknown origin in the cattle bought by their grandfather James Lindsay in 1937 from the Formo family, originally from Norway, in the Tangleflags District. (There were by then at least three Shorthorn herds in the area which might have accounted for the color pattern of the cow)

Mary liked the look of the unusually marked cow and bought it from her father. She already had her own cattle. The roan cow produced a white heifer with black points, which was bred to a Highland bull. The resulting bull calf was used on Jersey cows owned by Mary's sister Emma and the heifer calves from that cross were bred to Angus and Galloway bulls. Through the years she used Black Angus, Galloway, Highland and Shorthorn bulls.

In time this led to Mary Lindsay having her own unique cattle, red and white, or black and white, which she called Linebacks because of the white line along their backs.

Bill and Eileen (Pike) Lamont, of Scottish and English descent respectively, lived north of Maidstone, Saskatchewan, from 1946 to 1968, near Big Gully Creek. They were raising Black Angus cattle and after raising some different horse breeds had settled on raising Appaloosa's.



## THE ORIGIN OF SPECKLE PARK. THE TRUTH.

Bill was a good stockman and noted horse trainer. The Lamont's knew the Lindsay's through livestock. It was Eileen who bought the first Lineback heifer from Mary in 1962 . After that they bought more - whenever Mary thought she could let some go. They crossed them with the best Black Angus bulls Bill could get at the time. After several years of breeding Linebacks to the Angus Bulls, they started to breed colored cows to colored bulls. Bill and Eileen wanted black and white animals with dark faces but they also wanted good udders and good feet; they wanted strong, straight backs, docile, easy keepers with depth. When they started to think about creating a new breed Mary was pleased but she warned Bill of the troubles he might run into, not with cows but with people. Mary did not keep precise records on her cattle but she did give them what she could, stating that this animal had Galloway blood or another went back to Angus and another went straight back to the Formo cow. This was in the 1970's, when the Lamont's were living close to Maidstone by Highway 16.

Bill Lamont made up the official slogan - "The balanced beef breed with the color bonus," inspired by Doug Staniforth, butcher in Maidstone.

Compiled by Christine Pike with appreciation to Ian McKenzie, Rob Lindsay, and to Bill and Eileen Lamont. For more information go to [www.speckleparkoriginal.com](http://www.speckleparkoriginal.com)

-January 2011





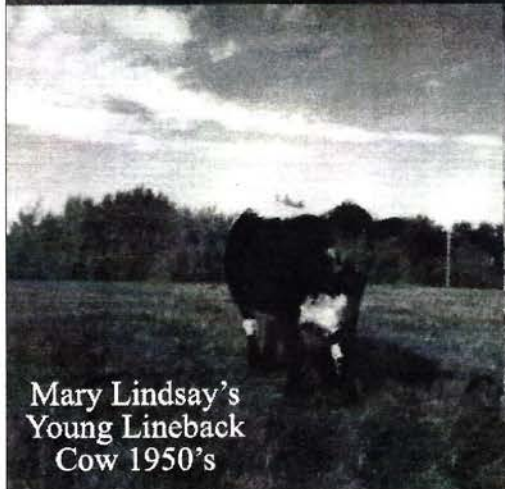
Three steers Toronto Royal 1973  
2nd Place (The Glasman's, Russell, MB)  
in the Pen of Three Class



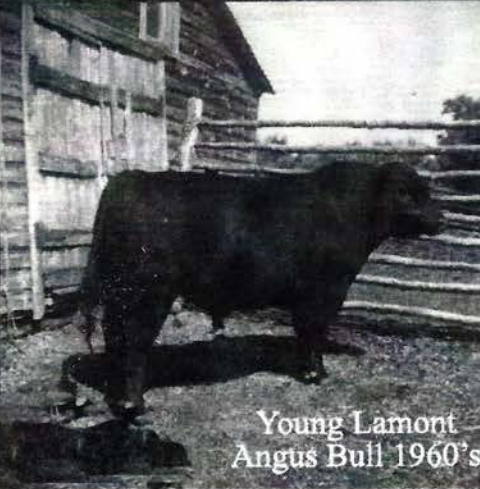
Early Speckle Park with  
Appaloosas at Lamonts



Lamont Appaloosa Foal 1980's



Mary Lindsay's  
Young Lineback  
Cow 1950's



Young Lamont  
Angus Bull 1960's